

## **HDPE Wind Tie Connection Supports**

Colored HDPE wind tie connection to fix steel clamps on HDPE Stay Pipes.

### **Data Sheet**

#### **Application**

Connection to fix steel clamp on HDPE Stay Pipe off Cable Stayed Bridges.

#### **Material**

NOFX-HDPE UV-stabilized same color as stay pipes.

#### **Kind of Item**

HDPE electrofusion element in divided parts (2 Halves) to enable fixing after stay pipe installation and either to use on stay pipes with external spirals.

#### **Installation**

Both wind tie connection halves are fixed in final position using steel clamps provided from us. Then the halves are welded on to the pipe by electrofusion welding method with our special electrofusion welding equipment.

#### **Sizes**

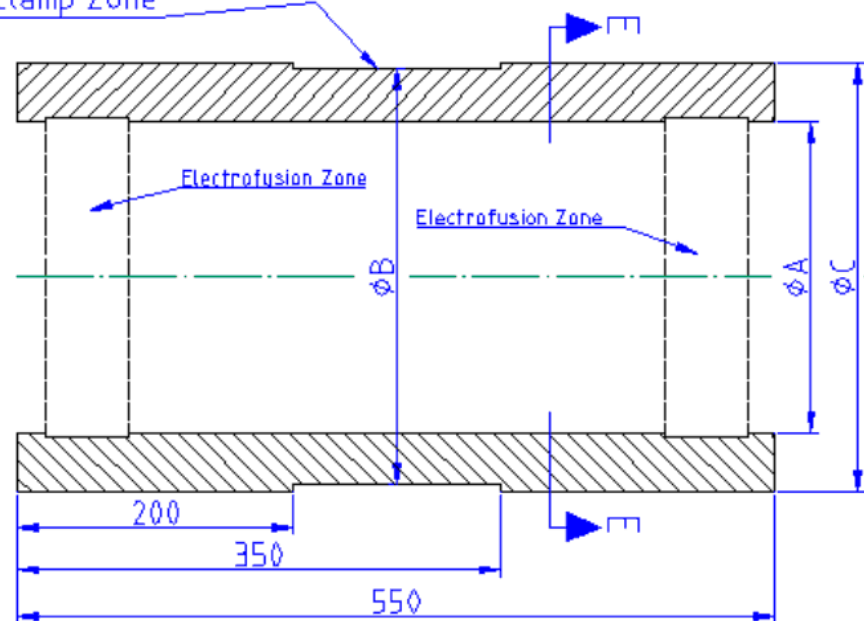
All sizes according stay pipe sizes are available.

Design modifications according required steel clamps are possible.

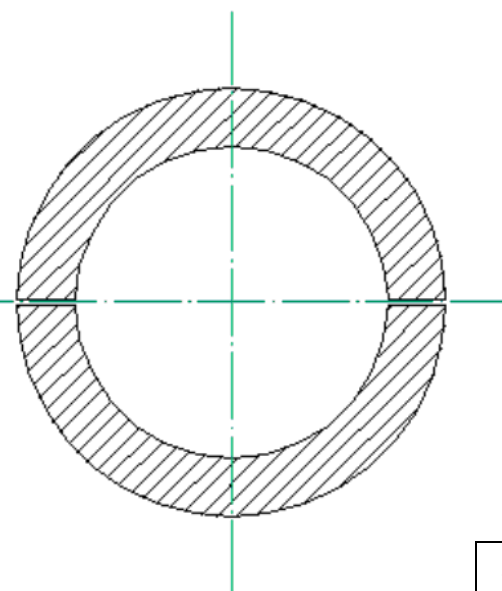
#### **References**

- Maysville Bridge, USA
- Gdansk Bridge, Poland

Steel Clamp Zone



Sight E - E:



divided in 2 halves

Size [mm]	ØA [mm]	ØB [mm]	ØC[ mm]
160	162	237	247
200	202	277	287
225	227	302	312

HDPE Wind-Tie Connection

Scale: no

Size ID 160 / 200 / 225 mm

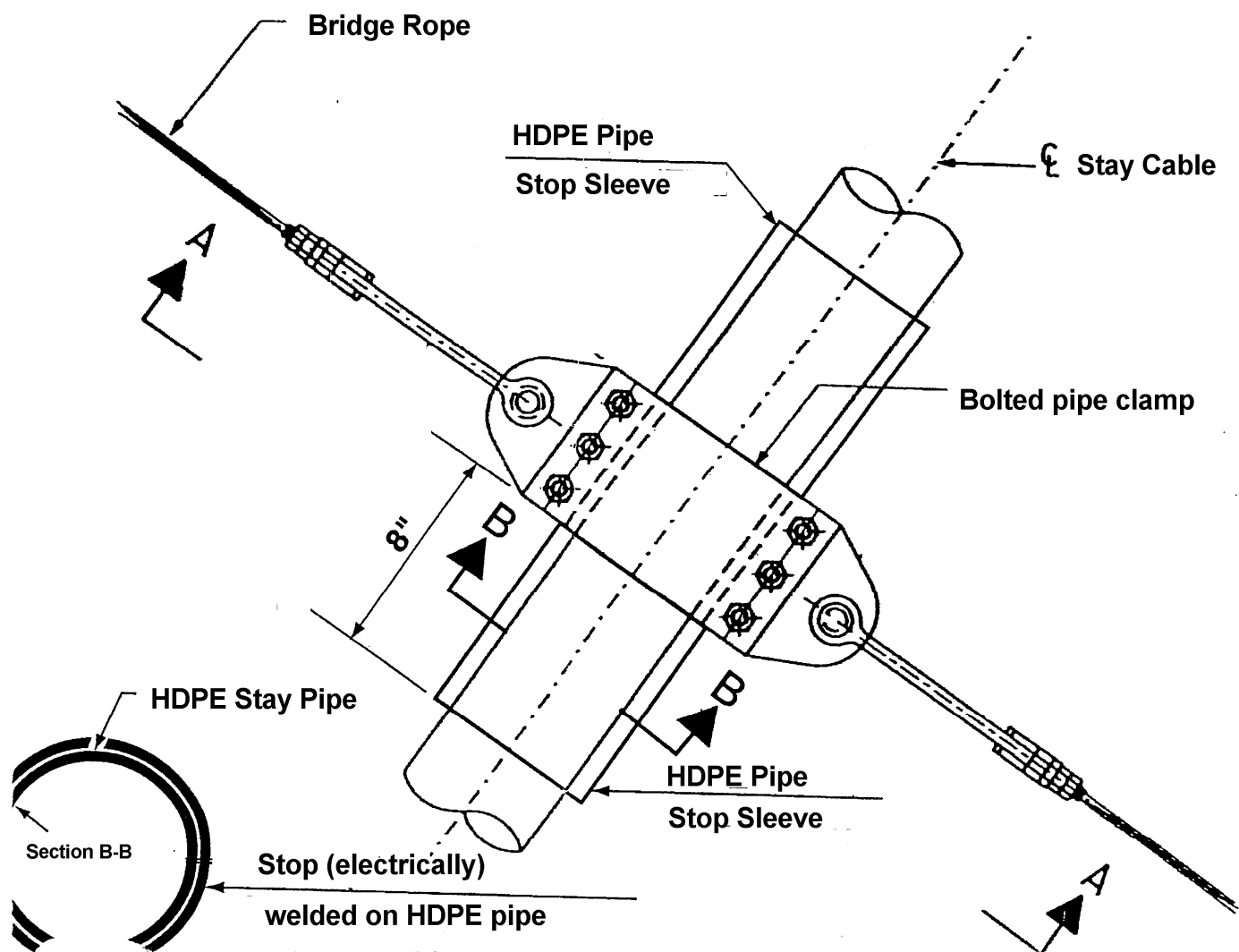
Drawn: SCH

P 150 – Wind-Tie Connection

Date: 07.06.2000

**PES.TEC**

This drawing including the specifications and details is our literary property. It is not allowed to copy the drawing without permission, to show them to unauthorised persons or to use it for other purpose as for the purpose it is given to the receiver. The



System drawing Wind-Tie	Scale: n.t.s.
HDPE	Drawn: LOK
P 150-2 – Wind-Tie Connection	Date: 24.03.2003

**PES.TEC**

This drawing including the specifications and details is our literary property. It is not allowed to copy the drawing without permission, to show them to unauthorised persons or to use it for other purpose as for the purpose it is given to the receiver. The drawing

