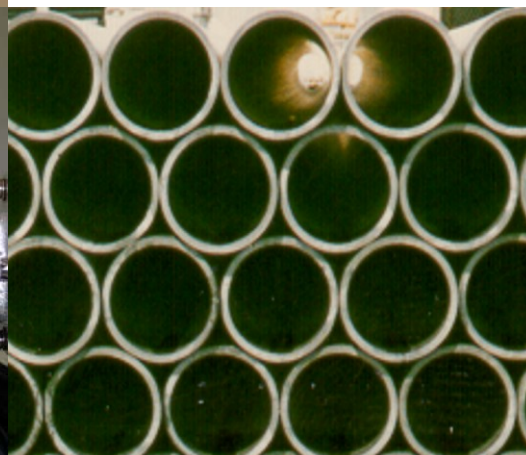
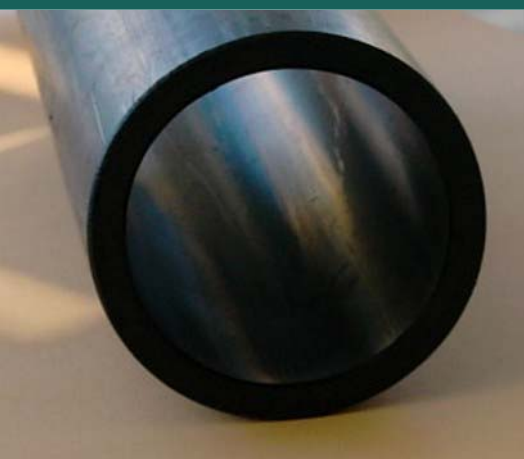


EP-1 HDPE SMOOTH PIPE

DS 310 E 0804



EP-1 HDPE SMOOTH PIPE

Technical Data

Smooth Polyethylen Pipe for durable corrosion protection of external post-tensioning cables complying to latest FIB recommendations

Kind of Duct	Smooth pressure pipe available in HDPE material grade PE 80
Production Norm	Compliance to FIB recommendations Production acc ASTM D 3035, F 714, EN 13244, ISO 161-1. Production certified to ISO 9001
Wall thickness	Standard Dimension Ratio SDR classes 7-32 available
Pipe colors	Standard black. Other colors or translucent color on request.
Sizes	20 – 400 mm in SDR classes 7-32.
Length	Standard length 5,8 or 11,8 m. Coils available for small sizes. Other length on request.
Advantages	<ul style="list-style-type: none"> • High durability and expected service life of 100 years • Safe and field approved pipe system • Safe and perfect welding or joint tightness • Best chemical resistance • Best mechanical resistance (abrasion and impact resistance, low fractures) • High flexibility • Easy to handle (low weight) • High temperature resistance (-40°C to +80°C)
Jointing	<ul style="list-style-type: none"> • Buttwelding according ASTM D 2657, DVS 2207 or BS 5955 Part 7 • Electrofusion with electrofusion fittings • Heat Shrink pipe connection longitudinal force locked • Big variety of non welding connection fittings • Big variety of transitions to other pipe materials
Material	High Density Polyethylen Grade PE 80 according ASTM D 3350 PE 345444 C, or ISO 1872
Fittings	Customized transition fittings on request
Grout Ports	Grout ports to weld fast and easy for pipe grouting and vents at every location requested. Available in several depth acc pipe wall thickness and with several thread connections.
Grouting components	Big variety as vent pipes, valves, end caps, vent pipe connections and others
Options	<ul style="list-style-type: none"> • NOHR-High Resistance pipe with improved rigid internal layer for high load strand stressing to avoid wall thickness damage at low bending radius • DHPS 2 Half pipes for after stressing installation or repair
Welding Equipment Rental	We offer big variety of welding equipments for rental or sale and service in the field.

Contact us for more details.

Discover PESTEC. Discover our ideas.

PESTEC GmbH, Am Limespark 2, D-65843 Sulzbach, Germany
 Phone ++49 6196-76681- 0 Fax ++49 6196-76681- 20
 contact@pes-tec.com www.pes-tec.com