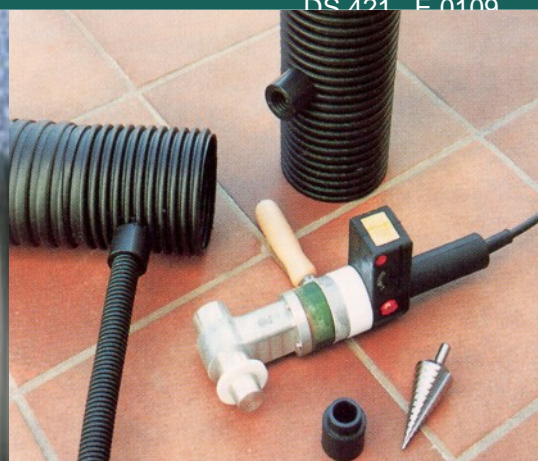


CIC 3 HDPE ANCHOR DUCT

DS 421 E 0100



CIC 3 HDPE ANCHOR DUCT

Technical Data

Corrugated HDPE Duct system for excellent corrosion protection of permanent ground anchors.

Kind of Duct	Standard wall corrugated plastic duct with circular flat corrugations																																				
Norm	No norms available																																				
Materials	Polyethylen acc ASTM D 3350 PE 345444 E with density of 0,94 g/cm3 at 23°C. Color black.																																				
Chemical Resistance	Against almost any type of chemical attack																																				
Sizes	<table><tr><th colspan="4">Sizes in mm</th></tr><tr><th>Model</th><th>OD</th><th>ID</th><th>Wall</th></tr><tr><td>49/42</td><td>49</td><td>42</td><td>1,5</td></tr><tr><td>55/46</td><td>55</td><td>46</td><td>1,5</td></tr><tr><td>64/54</td><td>64</td><td>54</td><td>1,5</td></tr><tr><td>78/68</td><td>78</td><td>68</td><td>1,5</td></tr><tr><td>98/89</td><td>98</td><td>89</td><td>1,5</td></tr><tr><td>125/113</td><td>125</td><td>113</td><td>1,5</td></tr><tr><td>162/148</td><td>162</td><td>148</td><td>1,5</td></tr></table>	Sizes in mm				Model	OD	ID	Wall	49/42	49	42	1,5	55/46	55	46	1,5	64/54	64	54	1,5	78/68	78	68	1,5	98/89	98	89	1,5	125/113	125	113	1,5	162/148	162	148	1,5
Sizes in mm																																					
Model	OD	ID	Wall																																		
49/42	49	42	1,5																																		
55/46	55	46	1,5																																		
64/54	64	54	1,5																																		
78/68	78	68	1,5																																		
98/89	98	89	1,5																																		
125/113	125	113	1,5																																		
162/148	162	148	1,5																																		
Duct Length	All sizes available in straight length standard 5,8 m or in coils. Other straight length on request.																																				
Advantages	<ul style="list-style-type: none">• High durability and exp. service life of 100 years• Safe and stiff pipe system• Possible to use for electrical isolated systems• Best chemical resistance• Best mechanical resistance (abrasion and impact resistance, low fractures)• Flexible• Easy to handle (low weight)• High temperature resistance (-40° to +80°C)• Environmental friendly material, saving electric power and water during production and fuel because of low weight during transport and installation.																																				
Jointing	<ul style="list-style-type: none">• Heat shrink sleeve																																				
Fittings	Spacer, High-pressure injection pipes, Port vents, Vent pipes, Valves, End caps and Shrink sleeve couplers with or without mastic available.																																				
Grout Port Welding	PESTEC Grout Ports weldable directly to the duct in economic, easy, professional, safe and pressure tight way using our special welding equipment.																																				
Options	<ul style="list-style-type: none">• PES CIC 1 PVC Anchor Pipes for bar anchors.• PES CIC 4 HDPE Anchor pipes with thick wall circular high corrugations• PES SIC 2 HDPE Anchor pipes with sinusoidal corrugations• PES SPC HDPE Anchor Pipes with spiral corrugated corrugations.																																				

Contact us for more details.

Discover PESTEC. Discover our ideas.

PESTEC GmbH, Am Limespark 2, D-65843 Sulzbach, Germany
 Phone ++49 6196-76681- 0 Fax ++49 6196-76681- 20
 contact@pes-tec.com www.pes-tec.com