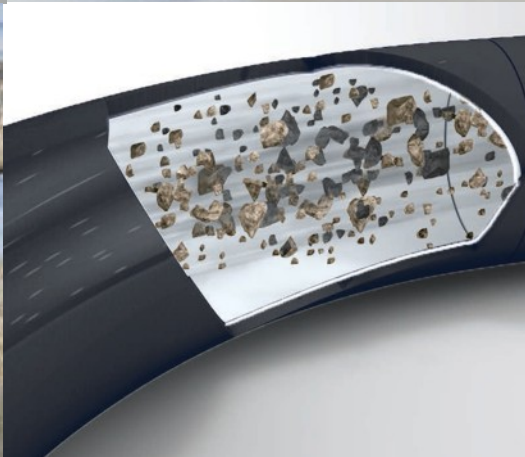
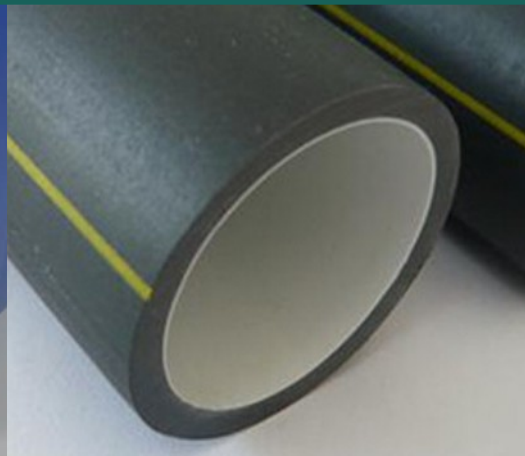
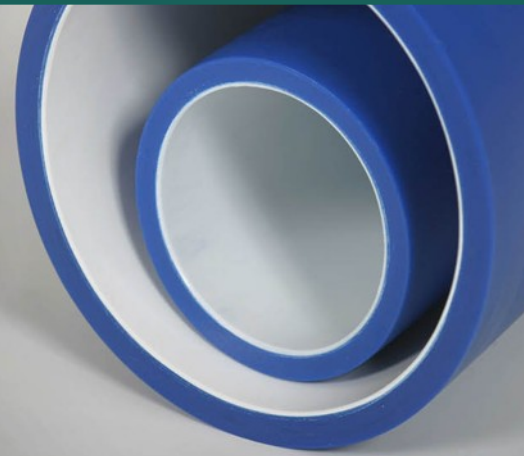
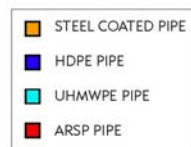
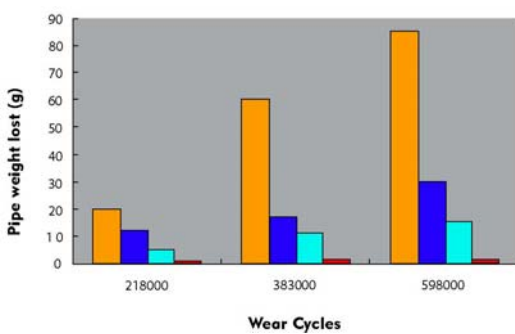


# AR HDPE SLURRY PIPE (ABRASION RESISTANT)

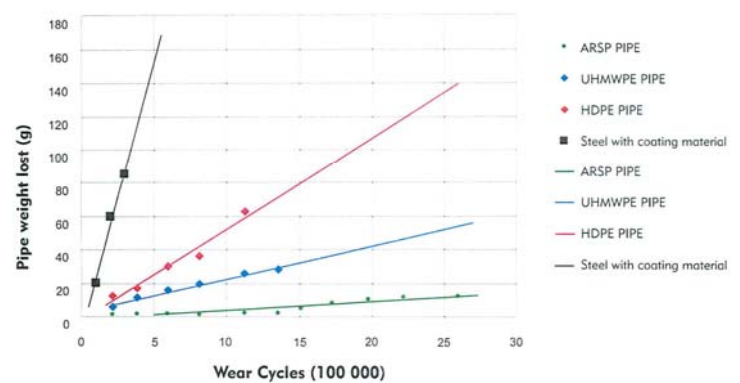
DS 614 E 0916



**Pipe weight lost**



**Abrasion resistance**



# AR HDPE SLURRY PIPE ( ABRASION RESISTANT)

Technical Data

**Advanced high abrasion resistant HDPE pipe Duct for transports and handling of highly abrasive materials like small sands, coarse sand, quartz, coal, minerals and others in mining and quarrying applications, sewerage processing, tailing, pulp and paper production**

<b>Kind of Duct</b>	Co extruded smooth HDPE duct with perfect bonding internal wear and tear resistant abrasive layer.
<b>Wear Layer Thickness</b>	Depending on application and request.
<b>Materials</b>	<ul style="list-style-type: none"> <li>• Outer layer is of Polyethylene material</li> <li>• Inner layer is of specially developed wear and tear resistant material</li> </ul>
<b>Wear Resistance</b>	AR HDPE pipe achieved outstanding low wall thickness change of <0,04 mm in 500.000 cycles Darmstadt test according PR EN 295-3:2012.
<b>Sizes</b>	63 – 500 mm SDR 26 – SDR 7
<b>Duct Length</b>	Standard length 11,8 / 12,0 m. Coil lengths possible on request.
<b>Material Properties</b>	Polyethylene acc ASTM D 3350 PE 345444 E with density of 0,94 g/cm <sup>3</sup> at 23°C
<b>Colors</b>	Standard Black. Other colors on request.
<b>Product Properties</b>	AR HDPE Slurry pipe has significant lower pipe weight lost compared to steel pipes with coating material, standard HDPE pipe and UHMWPE pipe.
<b>Jointing</b>	<ul style="list-style-type: none"> <li>• Butt Fusion</li> <li>• Electro Fusion</li> <li>• Flange Coupler</li> <li>• Push-Fit coupler</li> </ul>
<b>Fittings</b>	Bends, Tees, end caps and couplers
<b>Installation</b>	As standard HDPE pipes.

**Contact us for more details.**