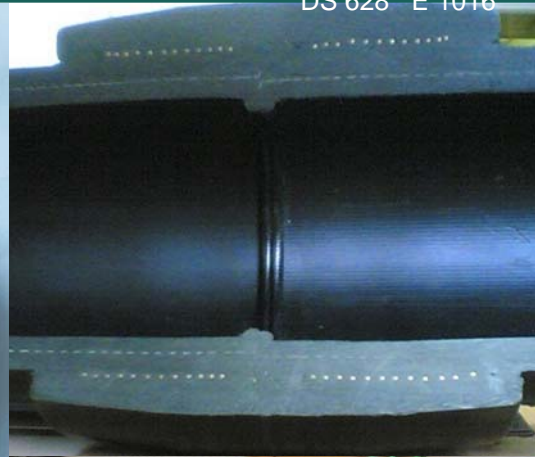
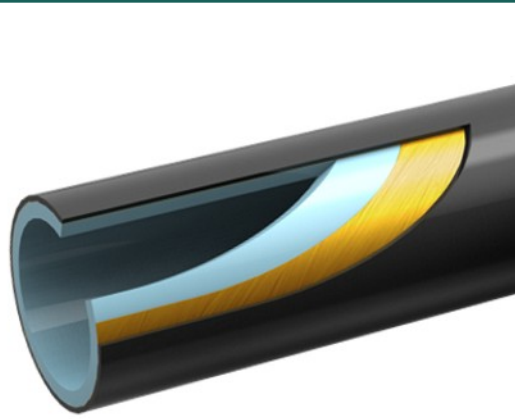


RTP LF HDPE PIPE – Low High Pressure

DS 628 E 1016



RTP LF HDPE PIPE – Low High Pressure

Technical Data

Aramid Fibre Reinforced Thermoplastic Pipe System for low high pressure (max 25 bar operating pressure) applications made of HDPE polyolefin material.

Kind of Pipe	3 Layer aramid fibre reinforcement pipe system
Application	Oil transport pipeline, multiphase mixtures and emulsions (water, oil, gas including high content on up to 25 bar, flow lines in buried, offshore or onshore/under water installation, water, sewage, drinking water, snow machine, Mining, Mining shafts, Firefighting, transport of non-flammable liquids, water-based suspensions, solid suspensions (filling, hydraulic transport) processing,
Materials	Inner HDPE PE 100 liner, Mid layer of aramid fibre reinforcement, Cover layer of PE 100
RTP LF Pipe	RTP LF Pipe is suitable for operating pressures up to 25 bar (50years) and up to 65°C and RTP LF HT Pipe for operation up to 25 bar and up to 85°C.
Sizes	RTP LF HDPE pipes 50 – 315 mm in PN class 25 bar (350 PSI).
Duct Length	Standard length 11,8 m
Material Properties	<ul style="list-style-type: none"> • HDPE Polyethylene PE 100 Grade PE 100 acc ASTM D 3350 min grade PE 345444 C • HDPE Polyethylene PE 100 RT
Colors	<ul style="list-style-type: none"> • Black • White (uv-stabilized) for exposed installation
Product Properties	<p>Advantages of RTP LF Pipes</p> <ul style="list-style-type: none"> • Medium high pressure flexible plastic pipeline system • Basically made of PE 100 with all extraordinary properties of HDPE • Minimum bending radius of only 1,0 -2,0 m (depending on size) can avoid fittings like bends • Easy and fast onshore installation up to 1000 m/day • Low friction, high throughput. Flow capacity of RTP LF pipe size 5' is same as 6' steel pipe due very low inner HDPE friction • Best hydraulic due to smooth inner surface. No infiltration or exfiltration, no root penetration • Fully corrosion resistant • Low maintenance • High Impact Strength • Max Hydrocarbon Fluid and Water Service temperature 65°C (HT – 85°C) • Max Water pressure 25 bar • Max short term operating pressure 60 bar (depend on pipe size) • Outer pressure 8 bar for all sizes • Very cost effective compared to steel pipe in corrosive environments
Jointing	<ul style="list-style-type: none"> • Pipe to pipe connection made by butt fusion and additional electro fusion fitting • Flange coupler
Fittings	Pipe to steel, pipe to flange available
Options	RTP LF HDPE Flange pipe with integrated full pressure rating flange connections

Contact us for more details.

Discover PESTEC. Discover our ideas.